



SE G & 4TH



For more information, please call

Located at the corner of SE G
and SE 4th St in Downtown
Bentonville

Location Benefits

- 5 minute walk to The Momentary
- Short walk to Bentonville Square & Crystal Bridges
- Easy access to Razorback Greenway Trail
- Near Blue Fish House, Airship Coffee, The Meteor Café, 8th Street Market

PRICING STARTING AT

\$425,000 per unit

1 Bedroom, 1 Bathroom

\$600,000 per unit

Live/Work Unit

\$720,000 per unit

2 Bedroom, 2.5 Bathroom

Wheelhouse Real Estate Management

Learn more about our properties at wheelhouse-re.com

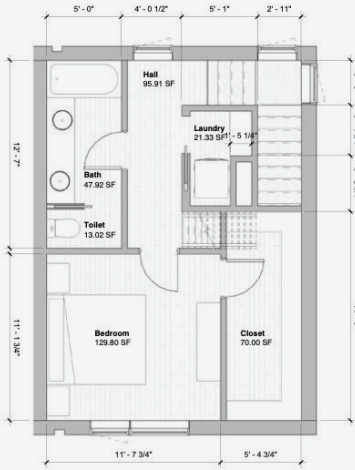
318-294-7607

EXTERIOR

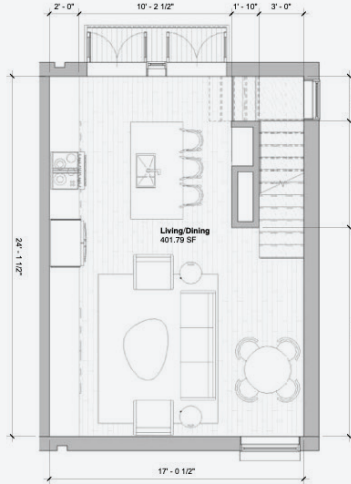


FLOORPLAN - 1 BEDROOM UNIT

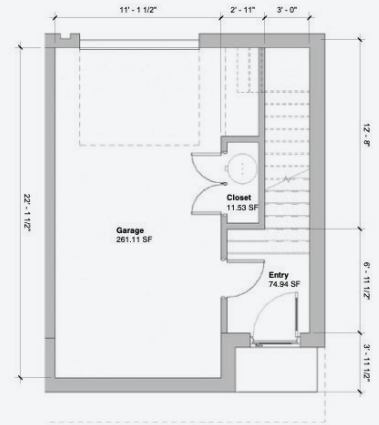
Level 03



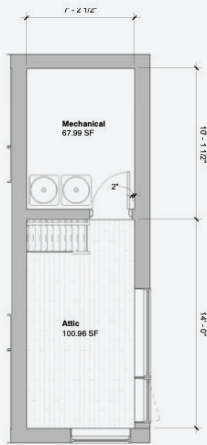
Level 02



Level 01



Attic/Mechanical

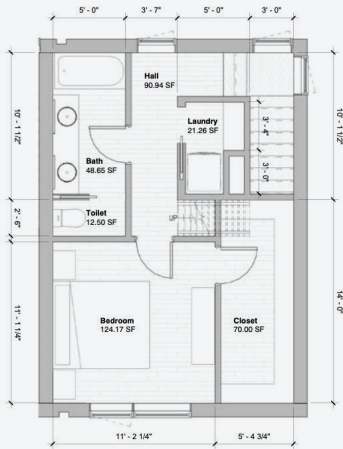


SITE MAP

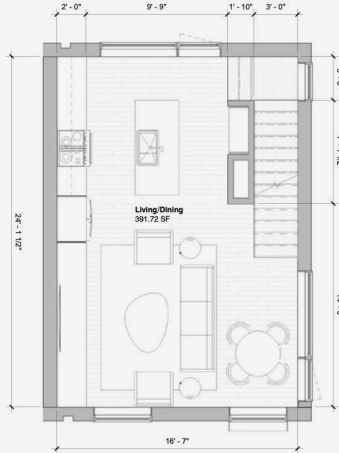


FLOORPLAN - LIVE/WORK UNIT

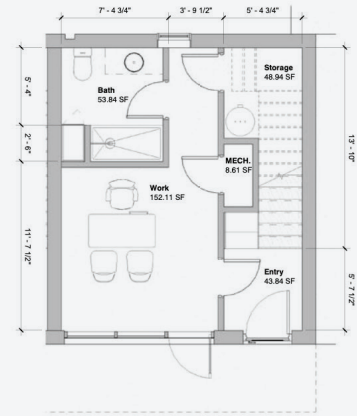
Level 03



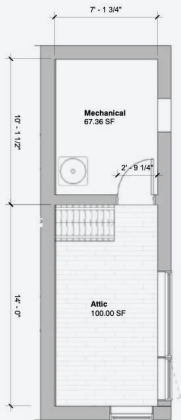
Level 02



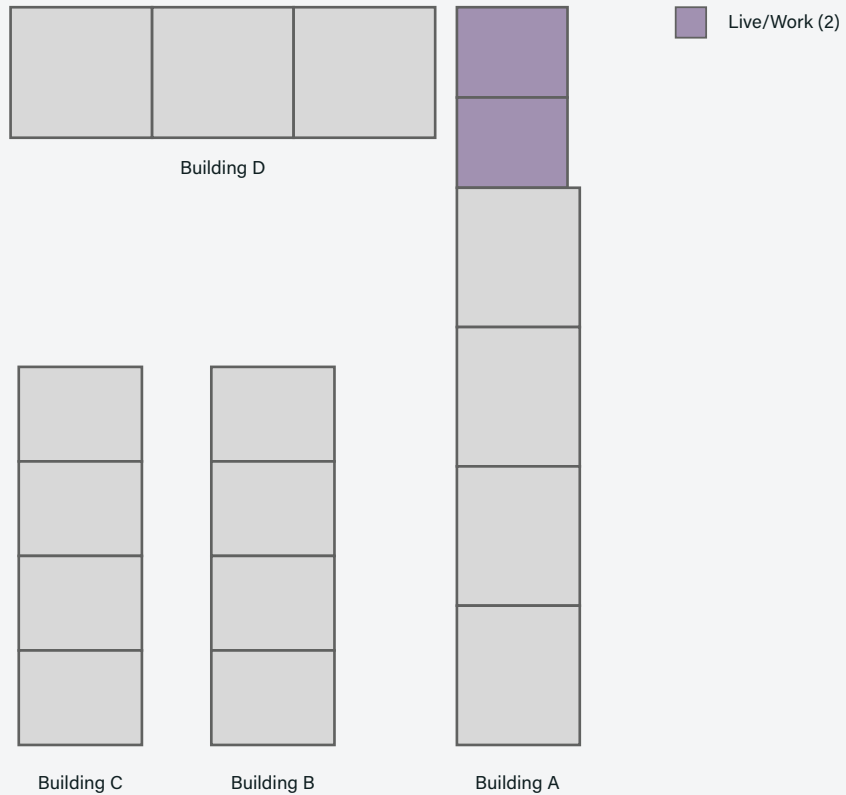
Level 01



Attic/Mechanical

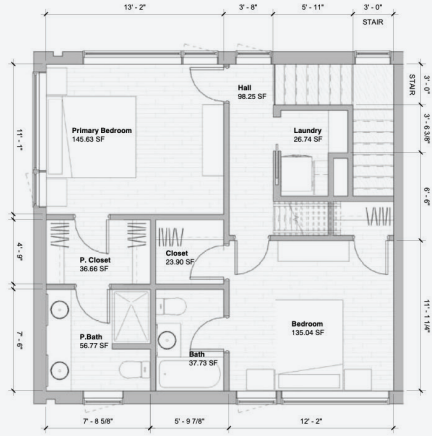


SITE MAP

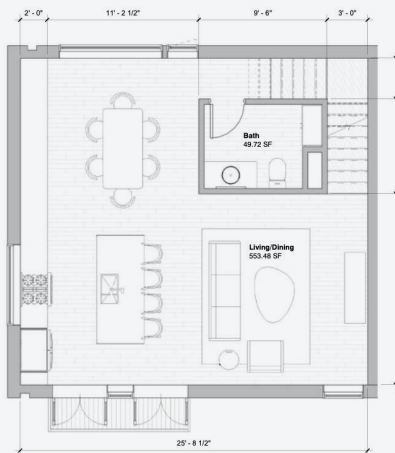


FLOORPLAN - 2 BEDROOM UNIT

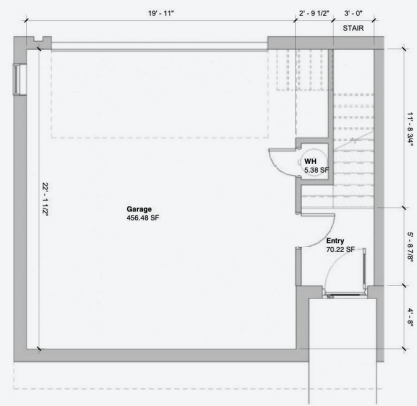
Level 03



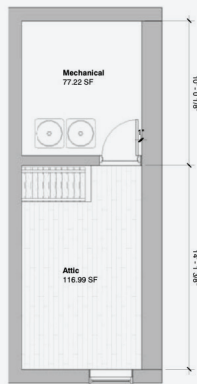
Level 02



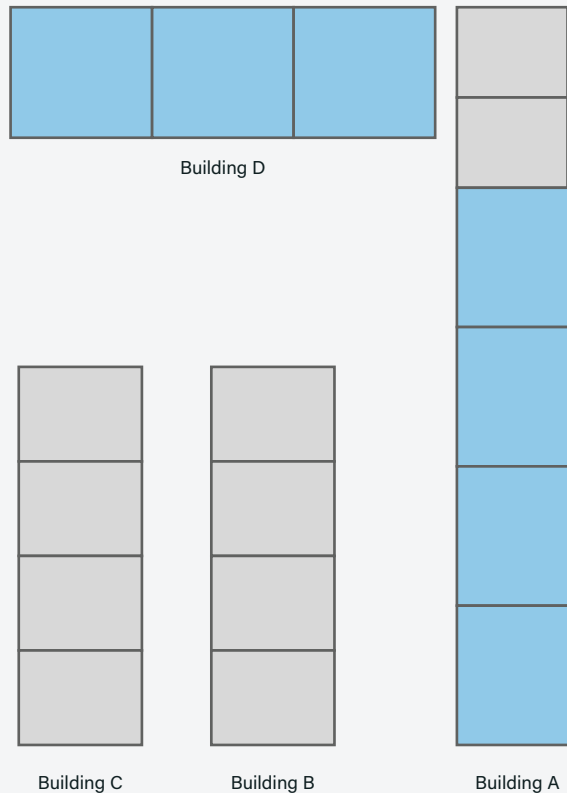
Level 01



Attic/Mechanical



SITE MAP



2 bed, 2.5 bath + attic (7)

INTERIOR

